



Pallets • Crates • Spill

PVC BUND COVER  
ASSEMBLY INSTRUCTIONS

**ECO-IBC PVC COVER**

# INCLUSIONS



Item No.	Description	Qty
1	Main Tonneau Bar	2
2	Bracing Bar	2
3	Top Frame	2 halves
4	PVC Cover	1
5	Lower Leg / Foot	4
6	Upper Leg	4
7	Joiner Rails	2
8	Tek Bit Driver	1
9	Tek Screws	20
10	M8 NY Lock Nuts	2
11	Button Head Screw	8
12	Phillips Head Driver	1

# INSTRUCTIONS

1. Place the two Top Frames (3) on the floor in order to assemble upside down.
2. Join the two Top Frames together by slotting in the spacer inserts. Ensure that the welds and screw holes are facing inwards, i.e. as shown in **FIGURE 1**. [This is to ensure that the PVC cover is not in any way torn or damaged by the welds or the screws.]
3. Insert the Joiner Rail (7) into Top Frame, and, as previous, ensure that the welds and screw holes are facing inwards. Ensure that the joiner rails are positioned (L/R) so that the 9mm holes are located at the top of the frame.
4. Insert Upper Leg (6) onto the Lower Leg (5). Using a batter drill with the Tek Driver (8), screw the Teks (9) into all designated holes [i.e. 2 screw holes per spacer] and tighten until the frame is rigid.
5. With the assistance of another person, turn assembled frame upright and ensure that the metal feet are resting appropriately on the plastic bund, i.e. as shown in **FIGURE 5**.
6. Slide the Bracing Tonneau Bar (2) onto the Main Tonneau Bar (1), as shown in **FIGURE 3**. Insert one end of Main Tonneau Bar into the hole in the Joiner Rail. Insert threaded end of the bracing bar through hole in End Rail of Top Frame. Flex the Main Tonneau Bar and insert end into opposite hole of Joiner Rail. See **FIGURE 4**.
7. Repeat process to other end. Fit M8 NY Lock Nuts (10) to the threaded ends of Bracing Bars and tighten with a 13mm spanner.



**FIGURE 1**



**FIGURE 2**



**FIGURE 3**



FIGURE 4

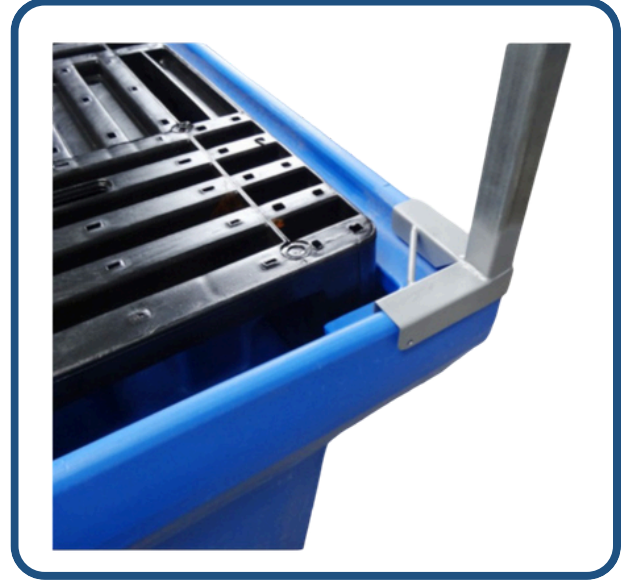


FIGURE 5

8. Ensure that the metal feet are firmly against the lip of the bund, and secure with the Button Head Screws **(11)**. Do not over tighten so as to strip the hole for the screw.
9. Ensure all fittings are firm and correctly mounted, and carefully fit the PVC Cover **(4)**.

**WARNING**

Load Rating as shown is for uniformly distributed & stationary load only.  
Point Loading and/or Impact Loading are not recommended and are at the discretion of the user to conduct a risk assessment.



Pallets • Crates • Spill

## CONTACT US

T: +61 8 9353 3113  
F: +61 8 6230 5136  
E: sales@ecopallets.com.au  
W: www.ecopallets.com.au

### PERTH HEAD OFFICE

Western Australia

15 Ashby Close,  
Forrestfield WA 6058

### SYDNEY WAREHOUSE

New South Wales

6/7 Smeaton Grange Rd,  
Smeaton Grange NSW 2567

T: +61 2 9601 6115 E:  
sales@ecopallets.com.au

### AUCKLAND WAREHOUSE

New Zealand

107 McLaughlins Road,  
Wiri, Auckland 2104

T: +64 9 8870 297  
E: sales@ecopallets.co.nz

### MELBOURNE WAREHOUSE

Victoria

21 Jets Court,  
Melbourne Airport VIC 3045

T: +61 3 9338 1331  
E: sales@ecopallets.com.au

### BRISBANE WAREHOUSE

Queensland

Shed 3.1 221 Gooderham Road,  
Willawong QLD 4110

T: +61 7 3275 2665 E:  
sales@ecopallets.com.au

### ADELAIDE WAREHOUSE

South Australia

6 Leeds St,  
Woodville North SA 5012

T: +61 8 9353 3113 E:  
sales@ecopallets.com.au