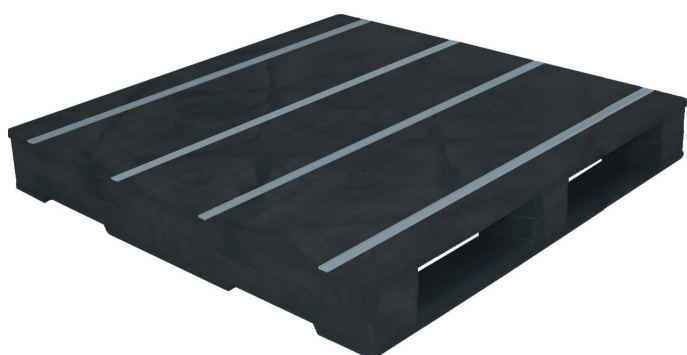
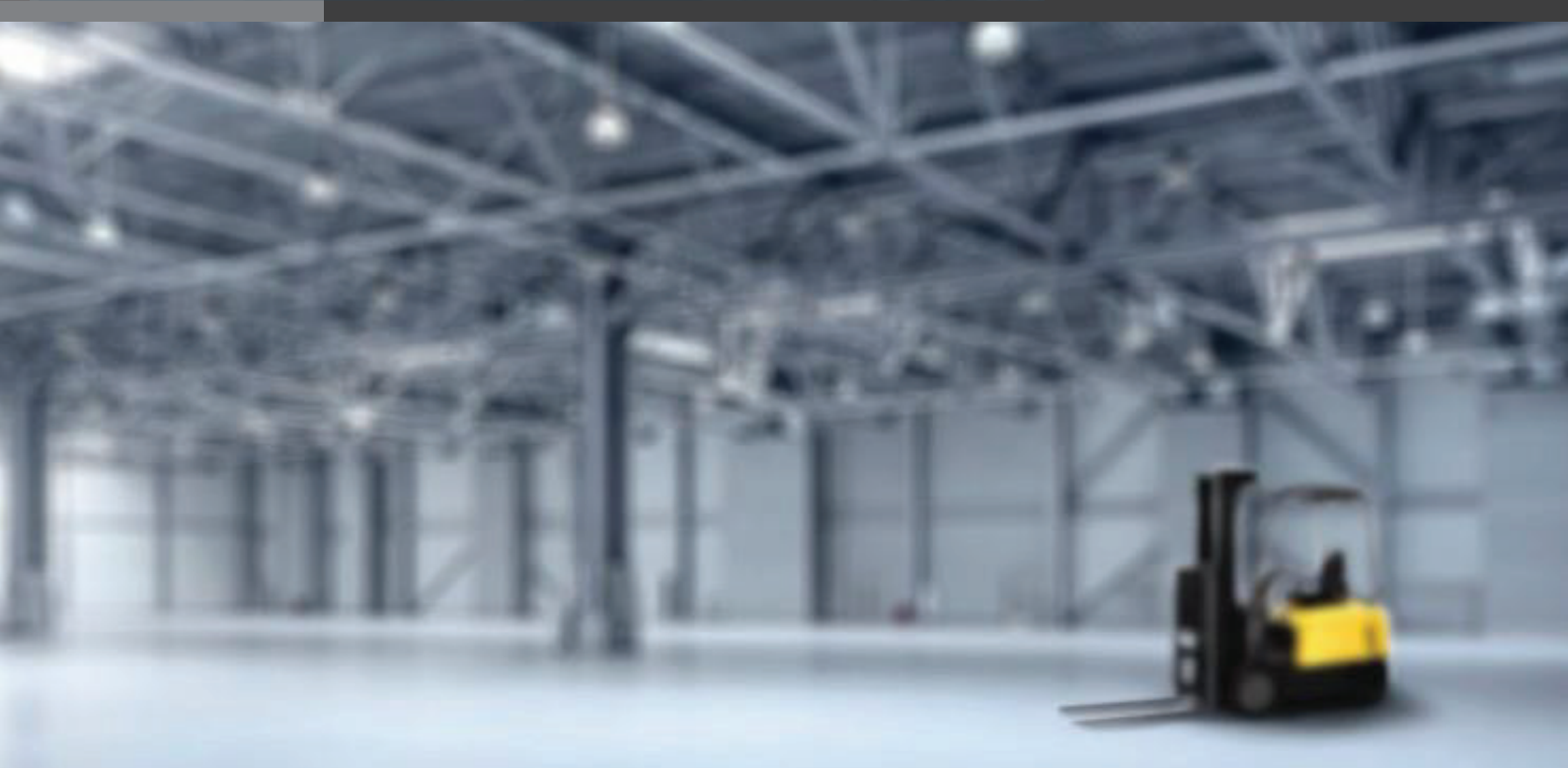


PALLETS • CRATES • SPILL



ECO-1165LS

▼ Eco Heavy Duty Series

APPLICATIONS

- Made for Australian warehouses
- 100% recycled plastic
- Suitable for warehouse applications
- Notches on bearers for secure beam racking
- Electronic & Electrical, Food & Beverage, Petrochemical Industries etc



ISPM-15
Compliant



No
Fumigation



Reduce, Reuse
& Recycle



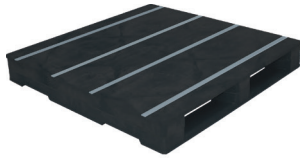
No heat
treatment

Anti-Slip | Solid Block Structure | 100% Recyclable

www.ecopallets.com.au

www.ecopallets.co.nz

PHOTO



Top View



Bottom View



Side View

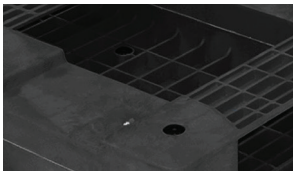


Paper & Printing

Food & Beverage

Chemical & Pharmaceutical Industry

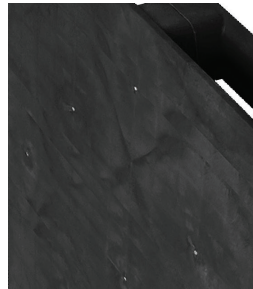
FEATURES



Bottom deck pallet studs

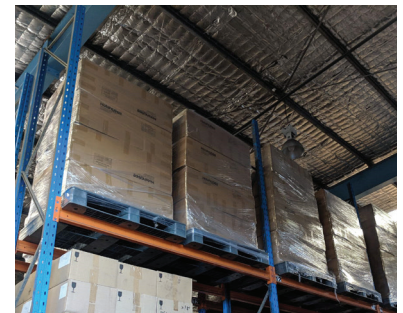


Solid block structure



Strong deck surface for heavy loads

APPLICATION



COMPLIANCE

Compliant to requirements of **ISO9001 & ISO14001**

SPECIFICATIONS

Size
1165 x 1165 x 153 mm

Material
100% Recycled HDPE

Standard Colour
Black

Weight
24.3 kg

Type
Heavy Duty

Static
10000 kg

Dynamic
2000 kg

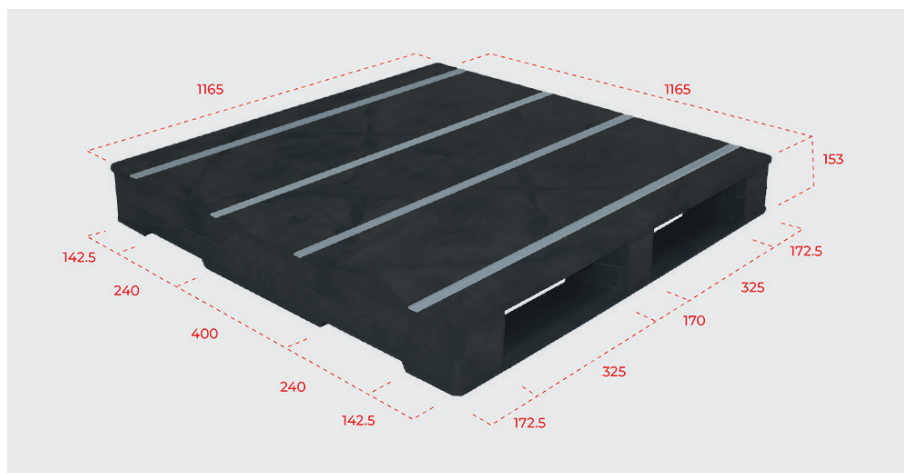
Beam Racking
2000 kg

Drive-In
1000 kg

Accessible by
2 way fork lift
2 way pallet jack

Based on Uniform Distributed Load (UDL)

PRODUCT DIMENSIONS



Perth Head Office

15 Ashby Cl
Forrestfield WA 6058

+618 9353 3113
sales@ecopallets.com.au

Sydney Warehouse 1

Gate 1/11-21 Forge Street
Blacktown NSW 2148

+612 9601 6115
sales@ecopallets.com.au

Sydney Warehouse 2

Dock 10/56 Jones St,
Pendle Hill NSW 2145

+612 9601 6115
sales@ecopallets.com.au

Melbourne Warehouse

21 Jets Court
Melbourne Airport 3045

+613 9338 1331
sales@ecopallets.com.au

Brisbane Warehouse

Shed 3.1 221 Gooderham
Road Willawong QLD 4110

+617 3275 2665
sales@ecopallets.com.au

New Zealand Warehouse

107 McLaughlins Road
Wiri Auckland 2104

+64 9 887 0297
sales@ecopallets.com.au

www.ecopallets.com.au

ABN 42 152 625 824 ACN 152 625 824

www.ecopallets.co.nz

GST No. 131 795 671