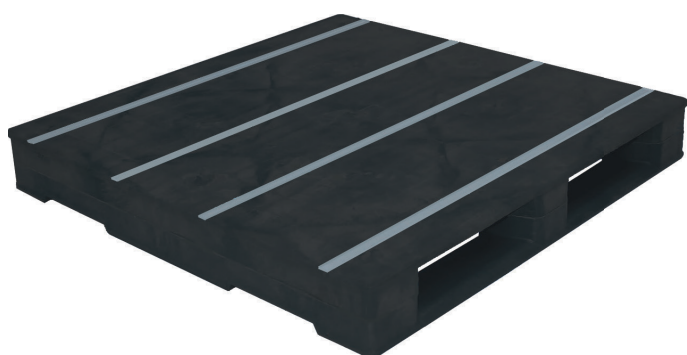
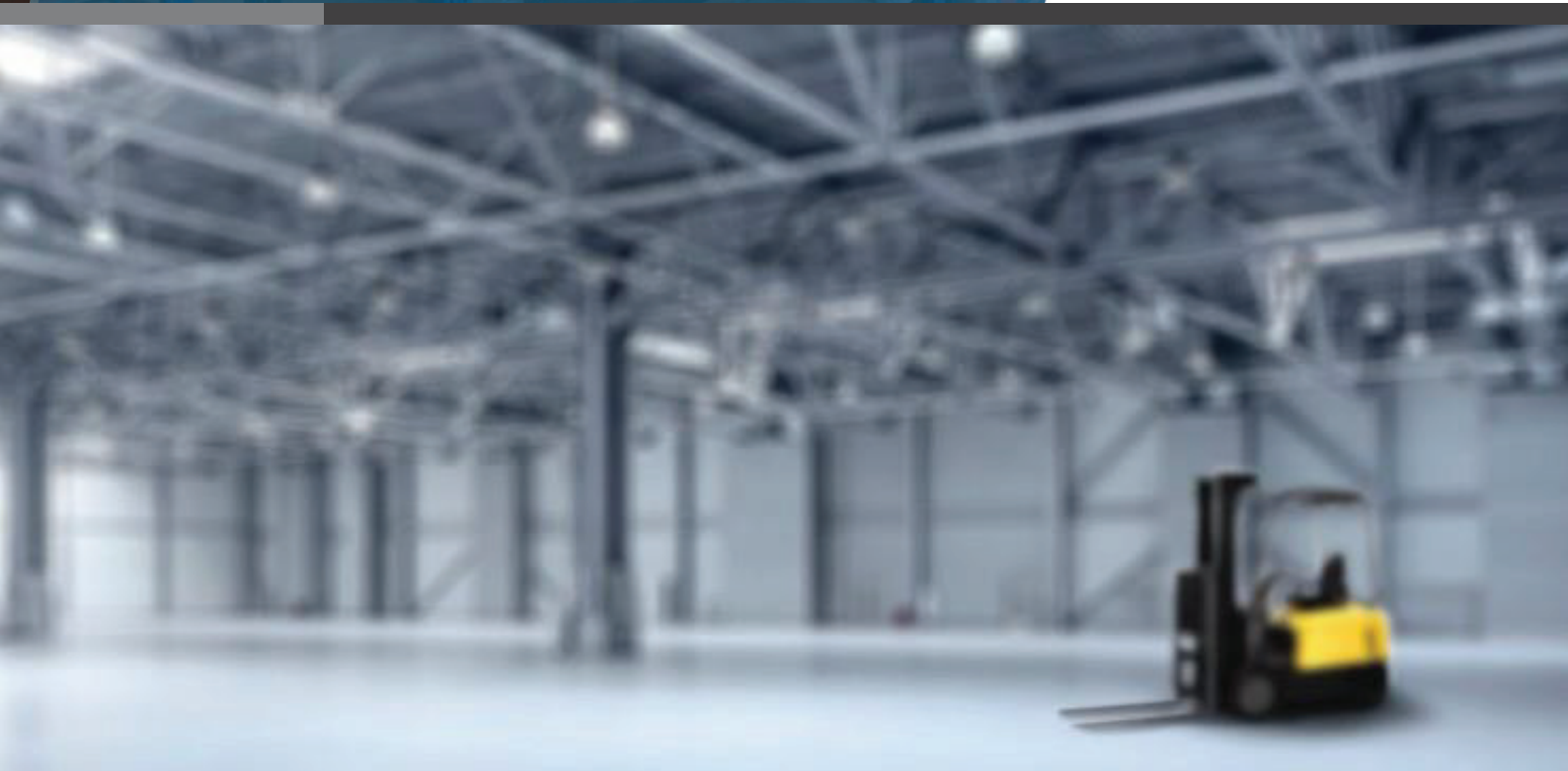


PALLETS • CRATES • SPILL



ECO-1165LS

▼ Eco Heavy Duty Series

APPLICATIONS

- Made for Australian warehouses
- 100% recycled plastic
- Suitable for warehouse applications
- Notches on bearers for secure beam racking
- Electronic & Electrical, Food & Beverage, Petrochemical Industries etc



ISPM-15
Compliant



No
Fumigation



Reduce, Reuse
& Recycle



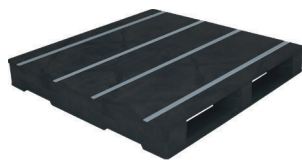
No heat
treatment

Anti-Slip | Solid Block Structure | 100% Recyclable

www.ecopallets.com.au

www.ecopallets.co.nz

PHOTO



Top View



Bottom View



Side View



Paper & Printing

Food & Beverage

Chemical & Pharmaceutical Industry

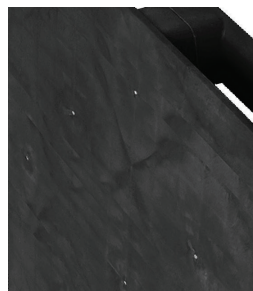
FEATURES



Bottom deck pallet studs

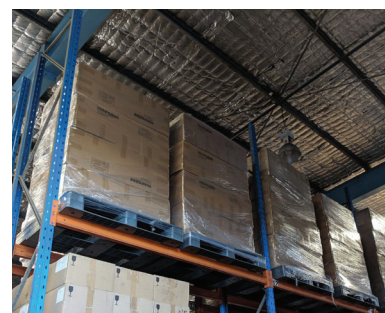


Solid block structure



Strong deck surface for heavy loads



APPLICATION



COMPLIANCE

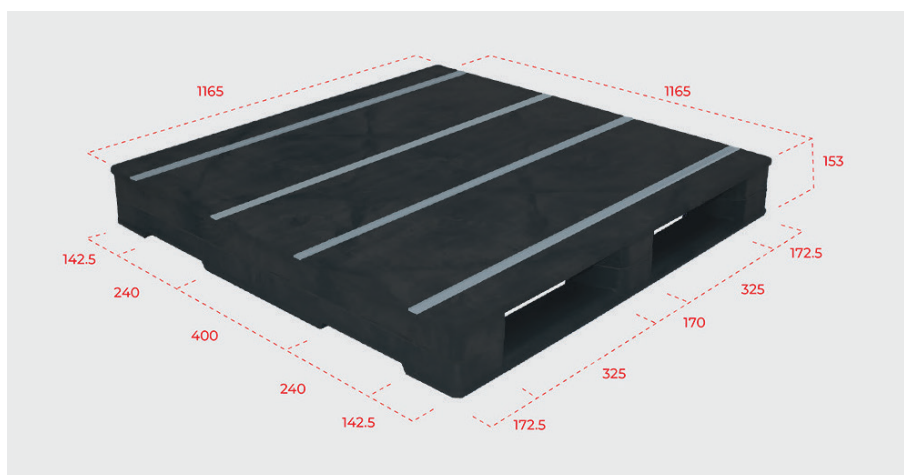
Compliant to requirements of **ISO9001 & ISO14001**

SPECIFICATIONS

Size 1165 x 1165 x 153 mm	Material 100% Recycled HDPE	Standard Colour Black	Weight 24.3 kg	Type Heavy Duty
*Static 10000 kg	*Dynamic 2000 kg	*Beam Racking 2000 kg	*Drive-In Racking 1000 kg	Accessible by 2 way fork lift  2 way pallet jack 

*Based on Uniform Distributed Load (UDL)

PRODUCT DIMENSIONS



Have an enquiry? Send our team an email
sales@ecopallets.com.au
sales@ecopallets.co.nz

Looking for us? Scan the QR code to
find out where!



www.ecopallets.com.au

ABN 42 152 625 824 ACN 152 625 824

www.ecopallets.co.nz

GST No. 131 795 671